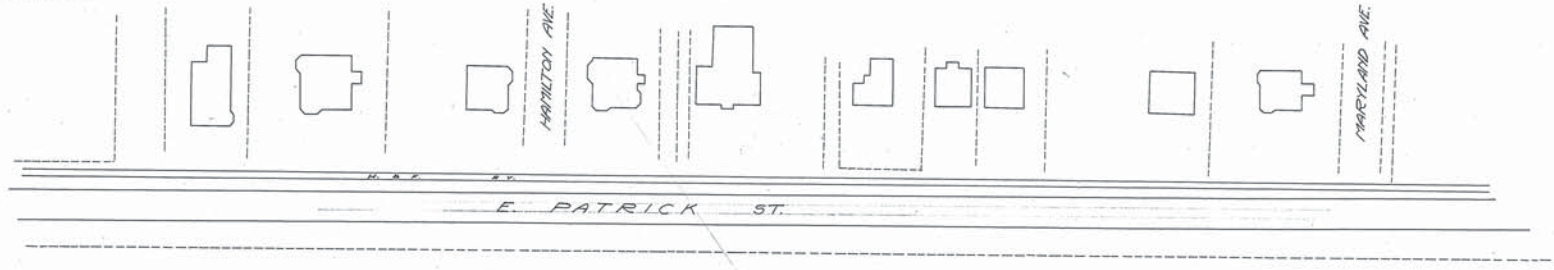


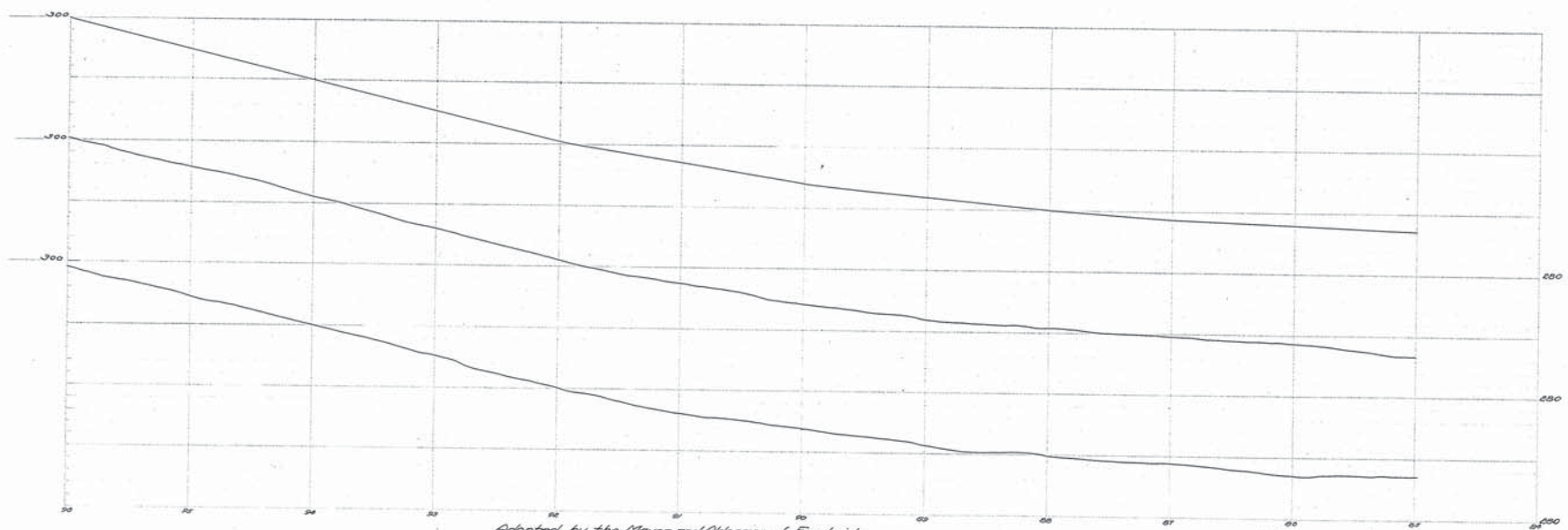
250521
PLAN & PROFILE

EAST PATRICK STREET

EMERY C. GRAY
CITY ENGINEER
FREDERICK, MARYLAND



614 - 214.11
1/16/11



Adopted by the Mayor and Aldermen of Frederick
by ordinance passed and approved March 23, 1926.

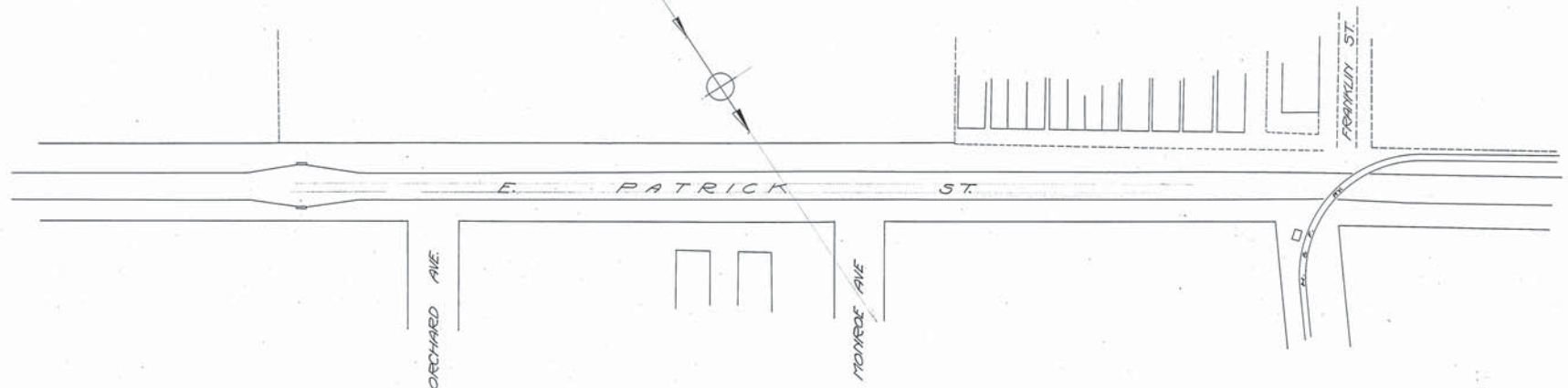
Attest:-

Anthony C. Wardman
City Registrar

Joseph G. Sullivan
Mayor

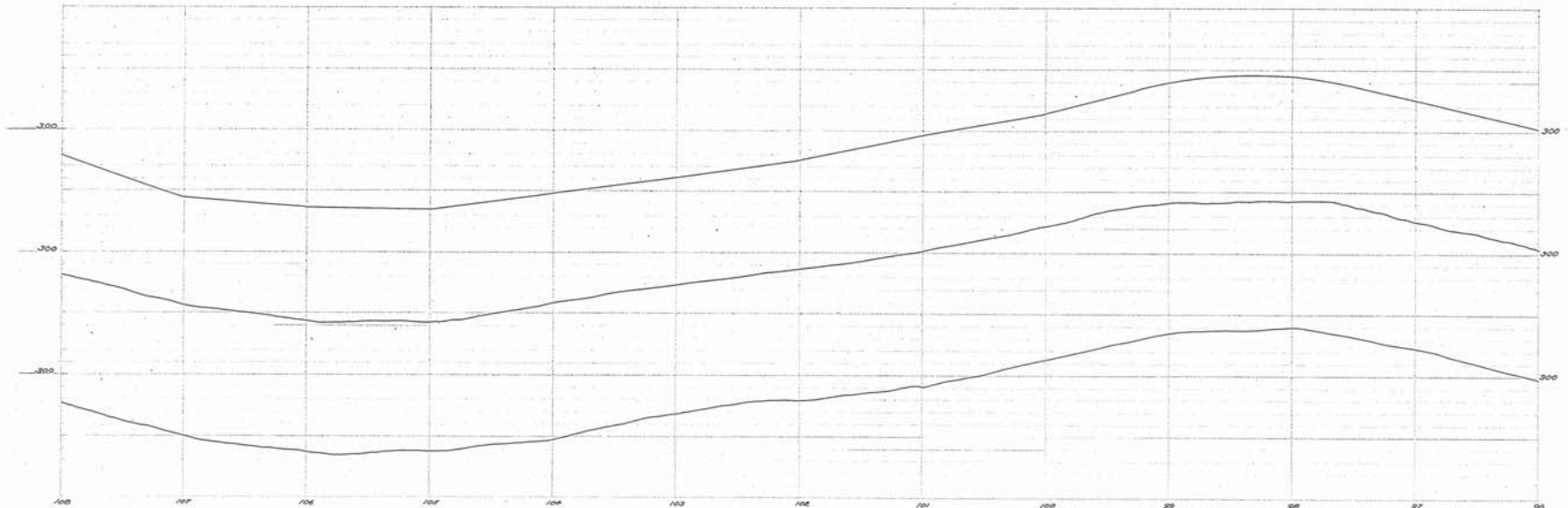
FREDERICK CITY
PLAN & PROFILE OF E. PATRICK ST.
SHOWING ESTABLISHED GRADE & STREET LINE
Scale 1" = 40'
Frederick, Md.
May 21, 1926
Sheet 1 of 3 Sheets

EMERY C. CRUM
CITY ENGINEER
FREDERICK, MONTANA



17 M - 342.36
T&A MP Sta 100+00
0.501 21

1216 - 124.18
T&A MP Sta
N. Culvert 25' x 25.5'



Adopted by the Mayor and Aldermen of Frederick
by ordinance passed and approved March 23, 1926.

Attest:-
Anthony A. Christensen
 City Registrar

The Mayor and Aldermen of Frederick
 By *Stefl & Suller*
 Mayor

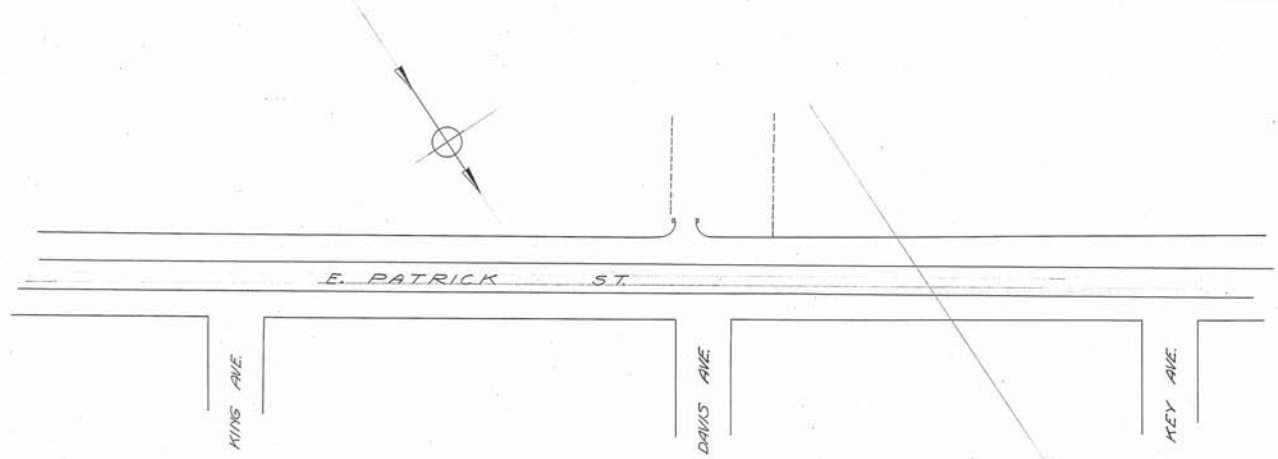
FREDERICK CITY
 PLAN & PROFILE OF E. PATRICK ST.
 SHOWING ESTABLISHED GRADE & STREET LINE
 Scales 1" = 40' Vert.
 1" = 100' Hor.
 Frederick, Md. May 21-1925
 Sheet 2 of 3 Sheets

170.250521-A
P.L.F.S.

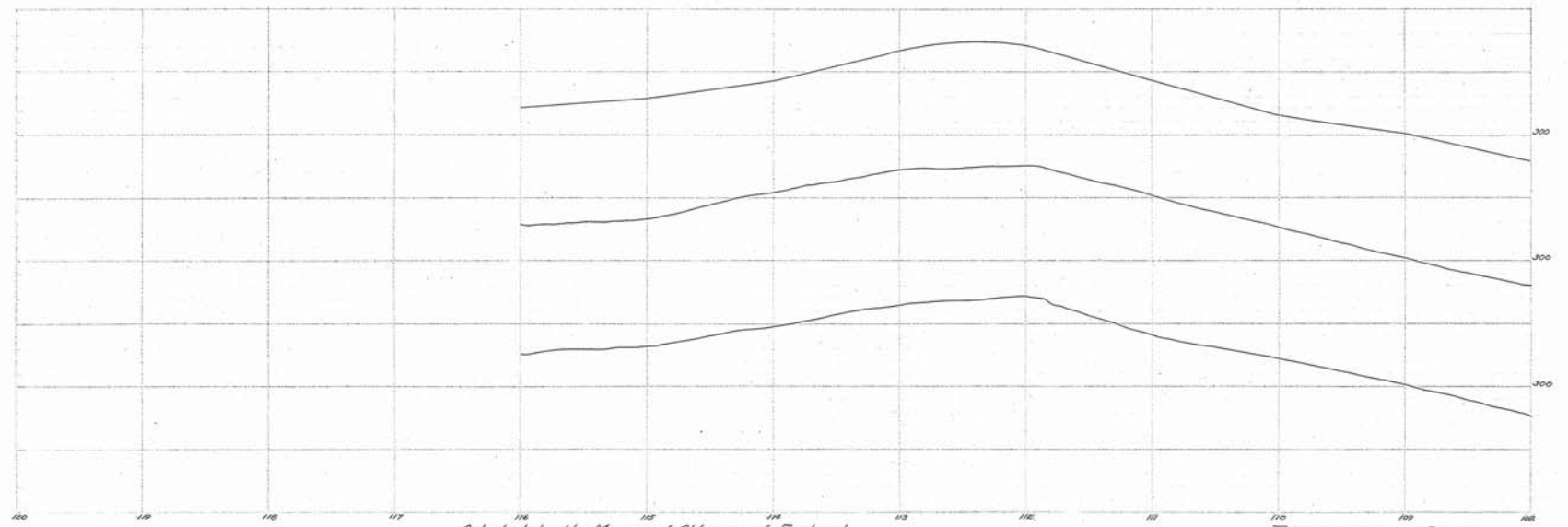
250521-A

250521-B
PLAN & PROFILE
EAST PATRICK STREET

EMORY G. CRUM
CITY ENGINEER
FREDERICK, MARYLAND



5' N - 25' W
TOP H.C.
14' CURB 3' x 10' 1/2"



Adopted by the Mayor and Aldermen of Frederick
by ordinance passed and approved March 23, 1926.

Attest:-
Amory R. Niedmann
 City Register

The Mayor and Aldermen of Frederick
 By *Styff & Suller*
 Mayor

FREDERICK CITY
 PLAN & PROFILE OF E. PATRICK ST.
 SHOWING ESTABLISHED GRADE & STREET LINE
 Scale: 1" = 4' Vert
 1" = 40' Horiz
 Frederick, Md. May 21, 1925
 Sheet 3 of 3 Sheets

No. 650521-D
250521-B