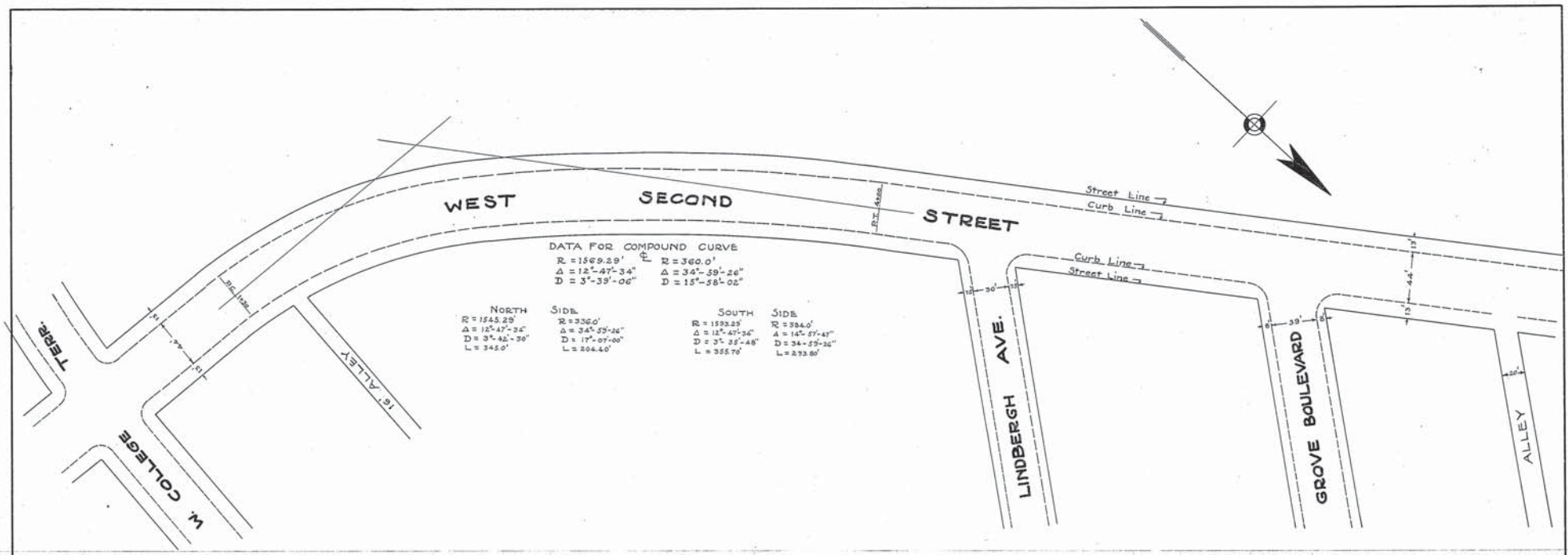


33169

PROFILE

PLAN &

WEST 2ND STREET



DATA FOR COMPOUND CURVE

R = 1589.29'	E	R = 360.0'
Δ = 12°-47'-34"		Δ = 34°-59'-26"
D = 3°-59'-06"		D = 15°-58'-02"

NORTH	SIDE	SOUTH	SIDE
R = 1543.29'	R = 356.0'	R = 1593.25'	R = 354.0'
Δ = 15°-47'-34"	Δ = 34°-59'-26"	Δ = 12°-47'-34"	Δ = 14°-57'-45"
D = 3°-42'-50"	D = 17°-07'-00"	D = 3°-25'-48"	D = 34°-59'-26"
L = 342.0'	L = 204.40'	L = 355.70'	L = 233.80'



FREDERICK CITY  
PLAN AND PROFILE OF WEST SECOND STREET  
SHOWING GRADE AND STREET LINES

SCALES: VERT. 1" = 4'  
HOR. 1" = 40'

ELMER ST<sup>th</sup> MAXWELL  
CITY ENGINEER

JUNE 14, 1939

Adopted by The Mayor and Aldermen of Frederick  
by ordinance passed and approved Feb. 28, 1940

Attest:  
*Louis E. Eichelberger*  
City Register.

The Mayor and Aldermen of Frederick  
*Alfred S. Coulter*  
Mayor.



J.S. Koenig