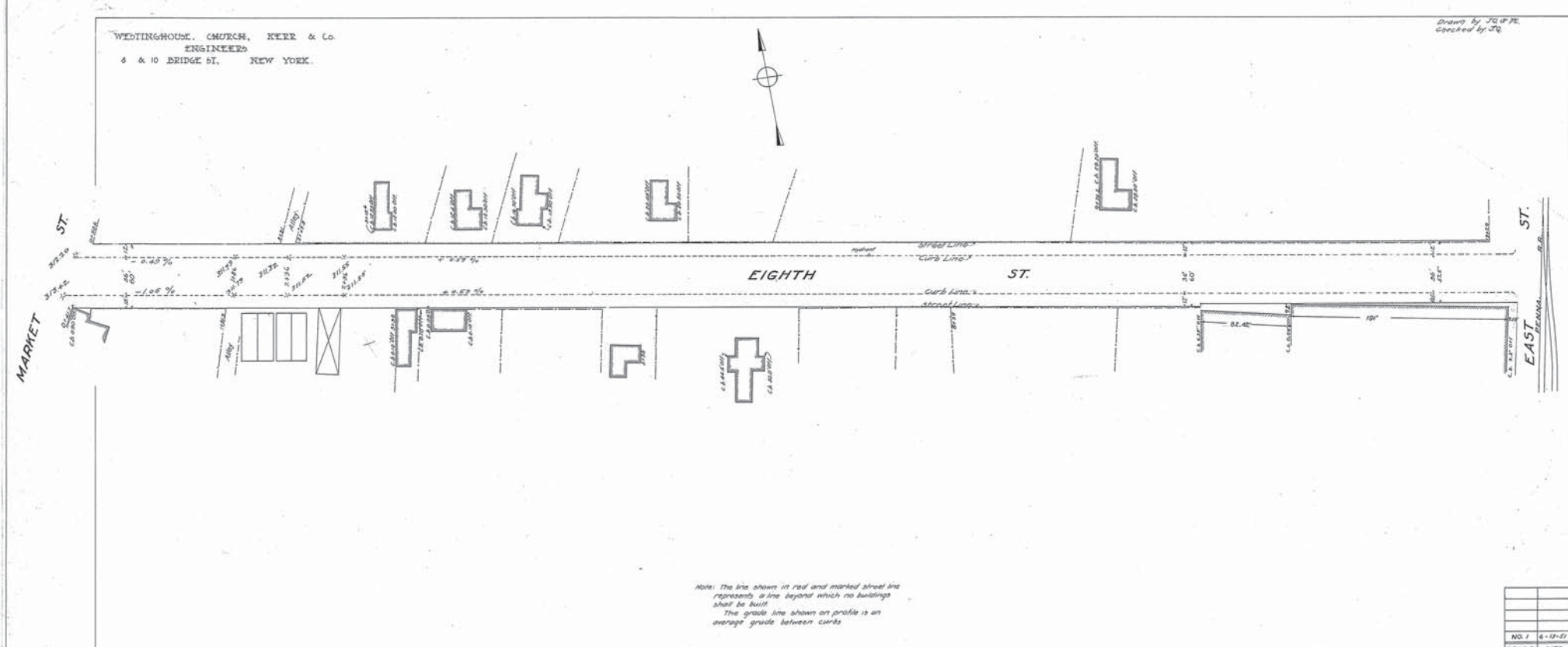
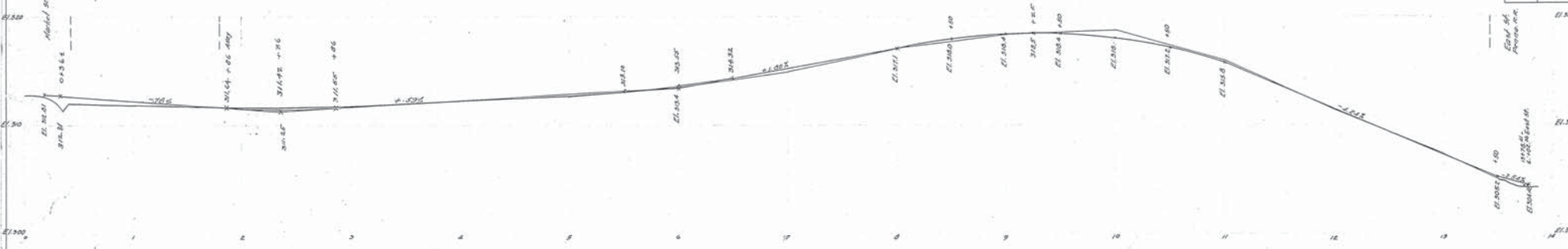


WESTINGHOUSE, CHURCH, KERR & Co.
ENGINEERS
4 & 10 BRIDGE ST., NEW YORK.

Drawn by J.G.P.R.
Checked by J.G.



Note: The line shown in red and marked street line
represents a line beyond which no buildings
shall be built.
The grade line shown on profile is an
average grade between curbs.



NO.	REVISION	DATE
NO. 1	6-12-07	

Adopted by The Mayor and Aldermen of Frederick
by ordinance passed and approved Dec. 3, 1909.

Attest:
Mrs. M. Cuffey
City Registrar.

The Mayor and Aldermen of Frederick
By
Wm. Edwin Smith Mayor.

FREDERICK CITY PLAN & PROFILE OF EIGHTH STREET.

SHOWING ESTABLISHED GRADE AND STREET LINE.
Frederick Md. Jan 24-1909.
Scale: 1"=40' hor. Sheet 1 of 1 Sheet.

N. Y. No 20466