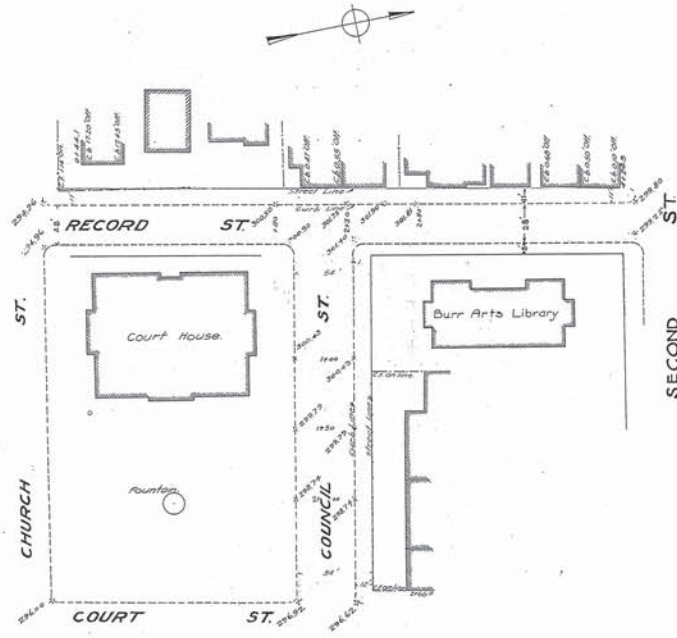
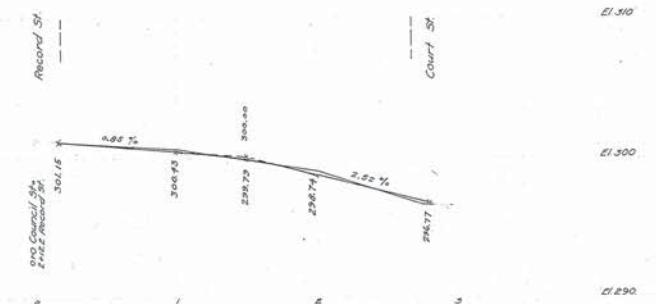
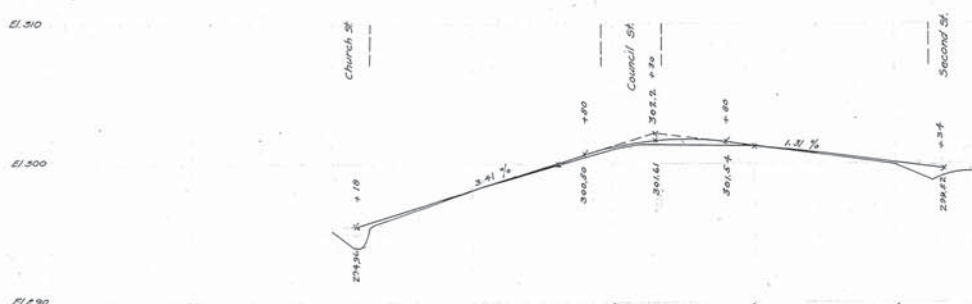


WESTINGHOUSE, CHURCH, KERR & Co.
ENGINEERS
6 & 10 BRIDGE ST., NEW YORK.

Drawn by J.O. & H.C.
Checked by H.F. & J.R.



Note: The line shown in red and marked street line represents a line beyond which no buildings shall build.
The grade line shown on profile is an average grade between curbs.



Adopted by The Mayor and Aldermen of Frederick,
by ordinance passed and approved, Dec. 3, 1909

Attest:
M. A. McCaffrey
City Registrar

The Mayor and Aldermen of Frederick,
By *W. Edwin Smith* Mayor.

FREDERICK CITY.
PLAN AND PROFILE OF RECORD AND COUNCIL STREETS
SHOWING ESTABLISHED GRADE AND STREET LINE.
Frederick Md. Oct. 21, 1907.

WESTINGHOUSE CHURCH, KERR & CO. 20047