

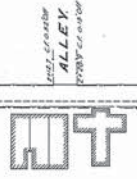
WESTINGHOUSE CHURCH KERR & Co.
ENGINEERS
6 & 10 BRIDGE ST. NEW YORK

Drawn by J. O. B. A. C. I.
Checked by J. R. G. S. H. C.

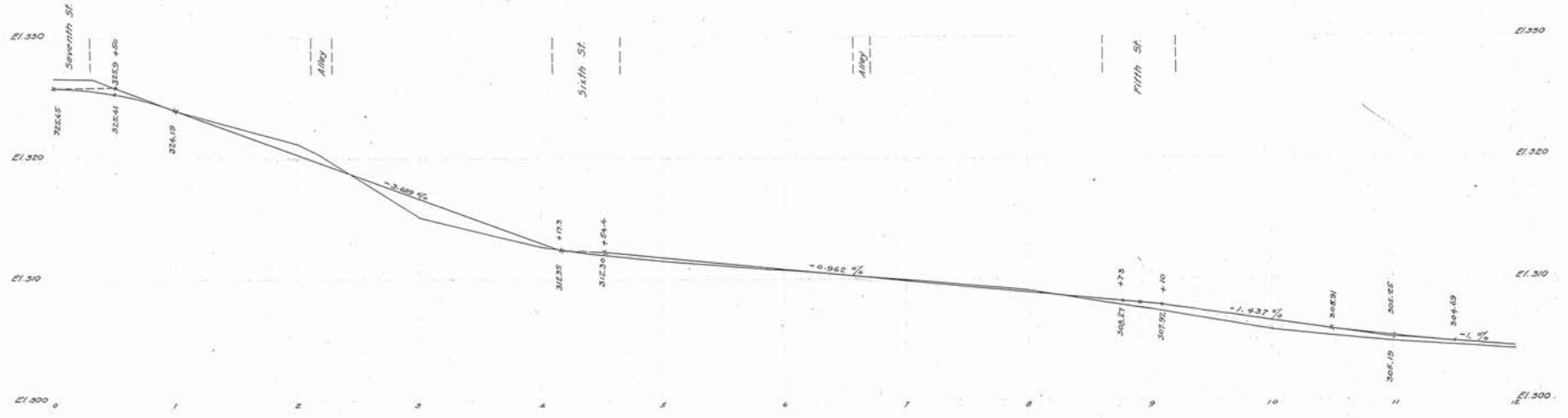
SEVENTH ST.

SIXTH ST.

FIFTH ST.



Note: The line shown in red and marked street line
represents a line beyond which no buildings
shall be built.
The grade line shown on profile is an
average grade between curbs.



Adopted by The Mayor and Aldermen of Frederick
by ordinance passed and approved Dec. 3, 1909.

Attest:
M. A. McCaffery
City Registrar

The Mayor and Aldermen of Frederick
By *Geo. Edw. Smith* Mayor.

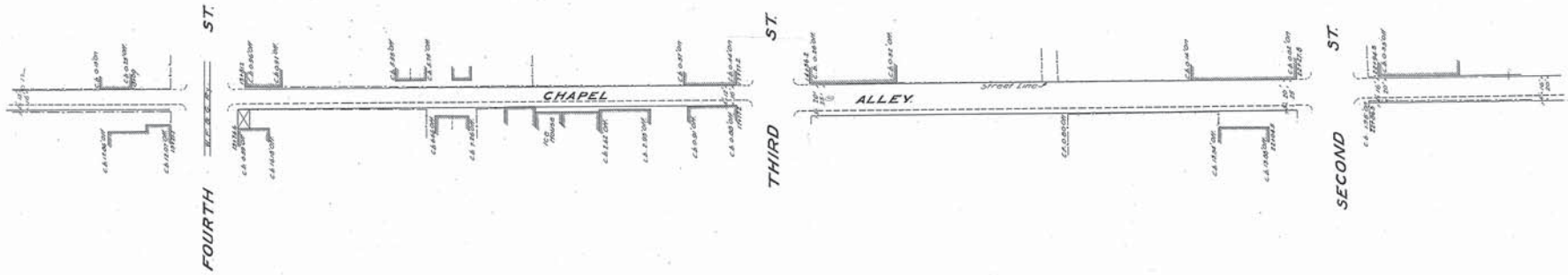
FREDERICK CITY.
PLAN & PROFILE OF CHAPEL ALLEY.

SHOWING ESTABLISHED GRADE & STREET LINE.
Scale: 1" = 40' H.P.
Frederick Md.
Sheet 1 of 5 Sheets. Revised Jan. 16, 1921.

N. Y. N° 20036
P-4-P-1

Drawn by J.G. & H.C.
Checked by J.G. & H.C.

WESTINGHOUSE CHURCH, KERR & Co.
ENGINEERS
8 & 10 BRIDGE ST. NEW YORK.



Note: The line shown in red and marked street line represents a line beyond which no buildings shall be built.
The grade line shown on profile is an average grade between curbs.



Adopted by The Mayor and Aldermen of Frederick
by ordinance passed and approved Dec. 3, 1909.

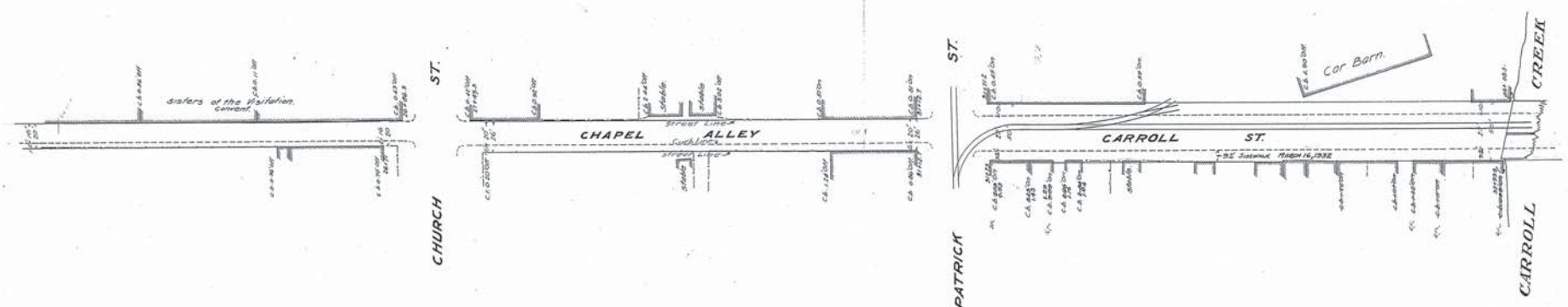
Attest: *W.A. McCaffrey*
City Registrar
The Mayor and Aldermen of Frederick
By: *Geo. Edwards* Mayor.

FREDERICK CITY
PLAN & PROFILE OF CHAPEL ALLEY.
SHOWING ESTABLISHED GRADE & STREET LINE.
Scale: 1" = 40 Feet
October 1, 1909
Frederick Md.
Oct 19 1907.
Sheet 2 of 5 Sheets.

N. Y. No. 20037.

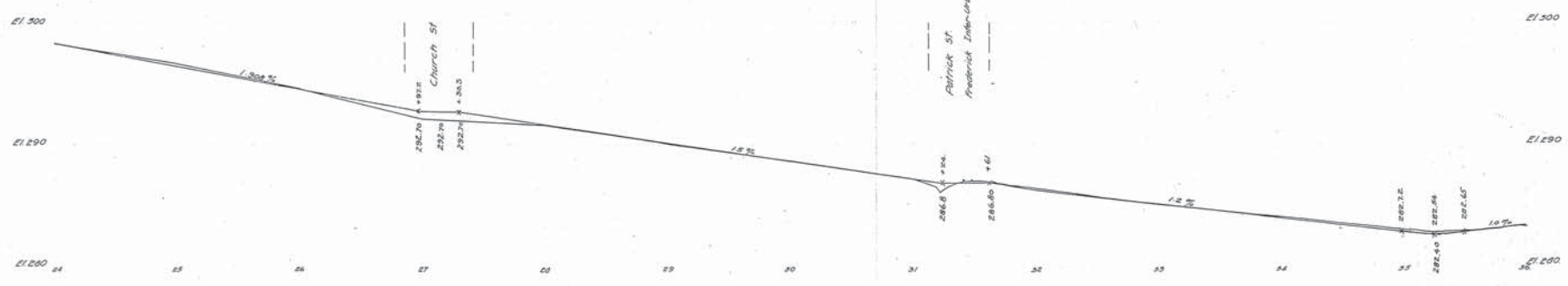
WESTINGHOUSE, CHURCH, KERR & Co.
ENGINEERS
6 & 10 BRIDGE ST. NEW YORK.

Drawn by J.Q. & R.C.
Checked by J.R. & R.C. (3)



REPEALED AND RE-ENACTED BY ORDINANCE PASSED AND
APPROVED MARCH 16, 1932
ATTEST: The Mayor & Aldermen of Frederick
CITY CLERK Mayor

Note: The line shown in red and marked street line
represents a line beyond which no buildings
shall be built.
The grade line shown on profile is an
average grade between curbs.



Adopted by The Mayor and Aldermen of Frederick
by ordinance passed and approved Dec. 3, 1909.

Attest: M.A. McCaffrey
City Registrar.

The Mayor and Aldermen of Frederick
By J. L. Smith Mayor.

FREDERICK CITY.
PLAN & PROFILE OF CHAPEL ALLEY.
SHOWING ESTABLISHED GRADE & STREET LINE.
Frederick Md
Oct 19 1907
Sheet 3 of 5 Sheets.

N. Y. N° 20038.

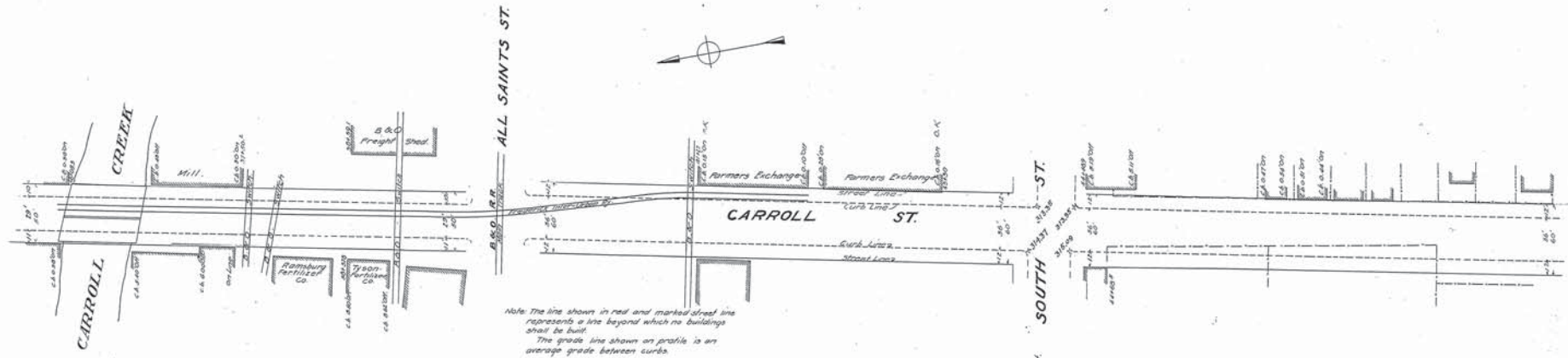
WESTINGHOUSE CHURCH, KERR & CO.

CHAPEL ALLEY

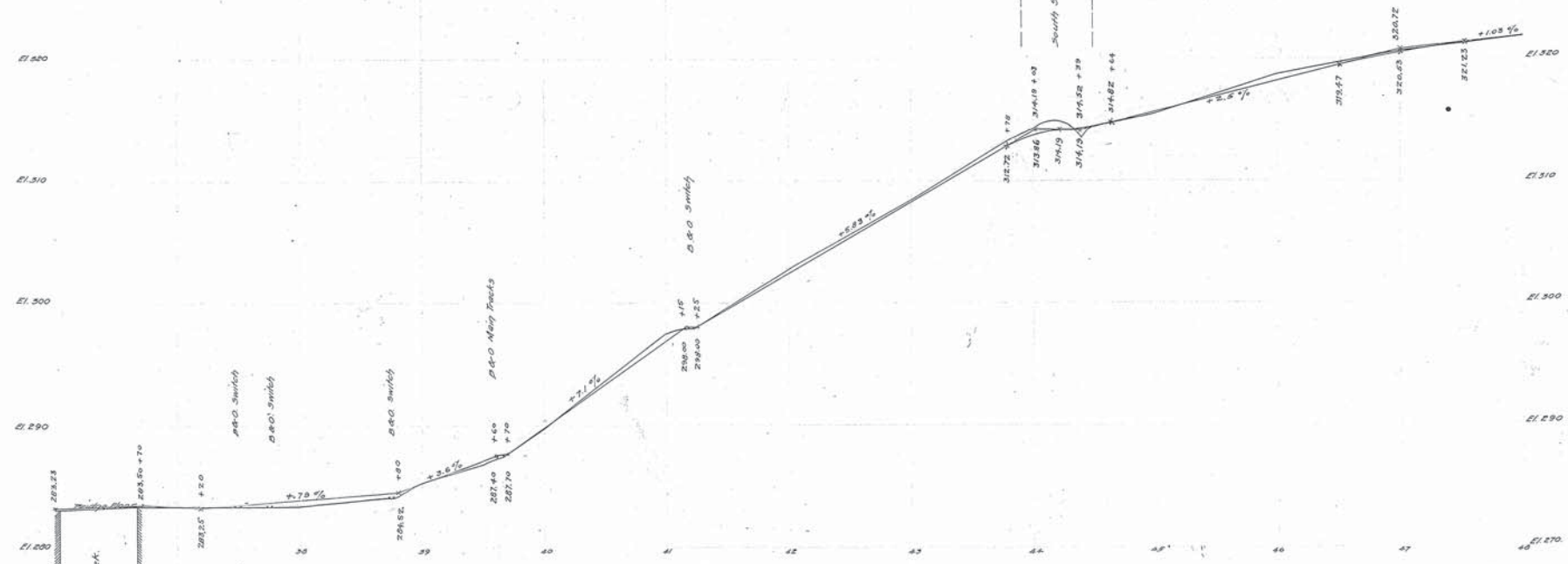
20038

WESTINGHOUSE CHURCH KERR & Co
ENGINEERS
8 & 10 BRIDGE ST, NEW YORK

Drawn by J.O. & R.P.
Checked by T.O. & O.L.



Note: The line shown in red and marked street line represents a line beyond which no buildings shall be built.
The grade line shown on profile is an average grade between curbs.



Adopted by The Mayor and Aldermen of Frederick,
by ordinance passed and approved Dec 3, 1909.

Attest:
M.A. McCaffrey
City Registrar

The Mayor and Aldermen of Frederick,
By
Wes. Edgar Smith Mayor.

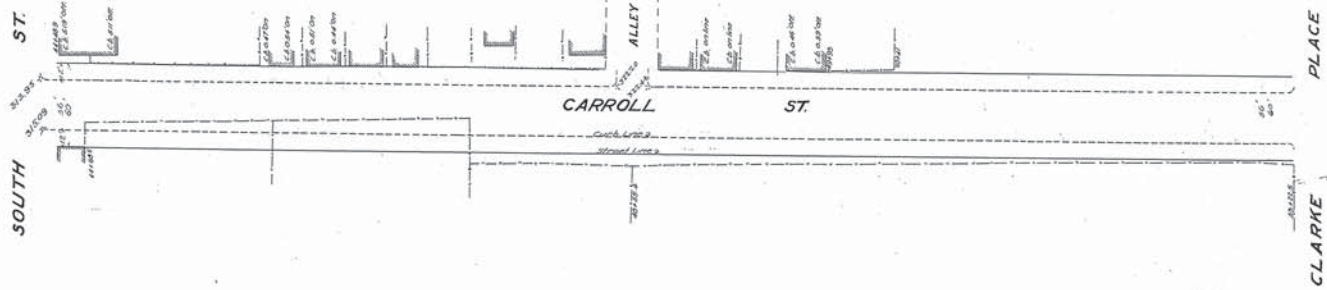
FREDERICK CITY.
PLAN & PROFILE OF CHAPEL ALLEY.
SHOWING ESTABLISHED GRADE & STREET LINE.
Scale: 1" = 40' Hor. 1" = 10' Vert.
Frederick Md. Oct. 15 1907.
Sheet 4 of 5 Sheets.

N. Y. No 20039

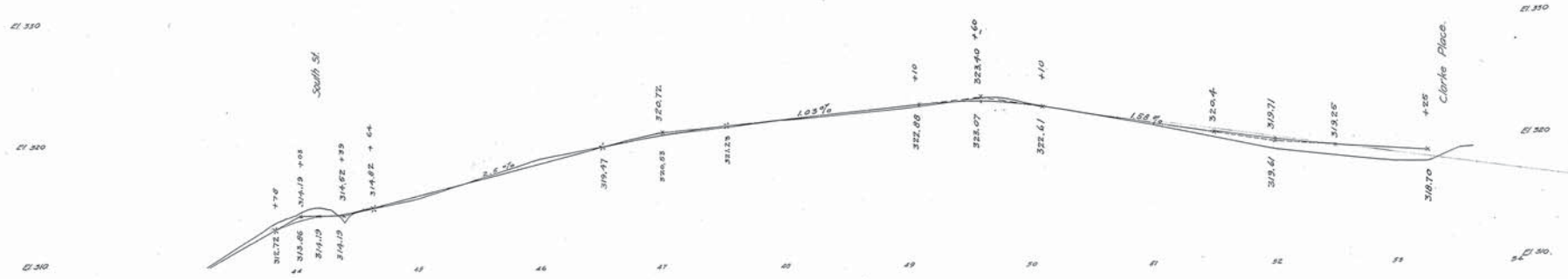
Drawn by J.Q. & P.
Checked by J.Q. & P.

5

WESTINGHOUSE CHURCH KERR & CO.
ENGINEERS.
6 & 10 BRIDGE ST. NEW YORK.



Note: The line shown in red and marked street line represents a line beyond which no buildings shall be built.
The grade line shown on profile is an average grade between curbs.



Adopted by The Mayor and Aldermen of Frederick
by ordinance passed and approved Dec. 3, 1909.

Attest:
W.A. McCaffrey
City Registrar

The Mayor and Aldermen of Frederick,
By
Geo. Edwin Smith
Mayor

FREDERICK CITY.
PLAN and PROFILE of CHAPEL ALLEY.
SHOWING ESTABLISHED GRADE and STREET LINE.
Frederick Md.
Oct. 19, 1907.
Sheet 5 of 5 Sheets.

N.Y. No 20040

WESTINGHOUSE CHURCH, KERR & CO. 20040 CHAPEL ALLEY