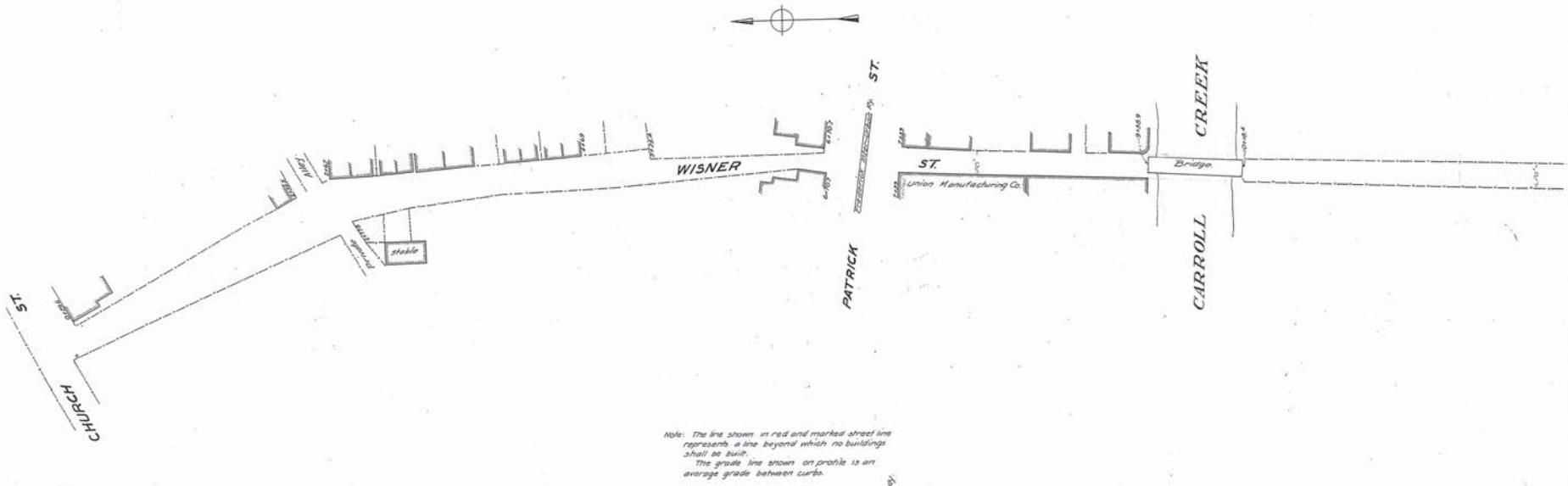
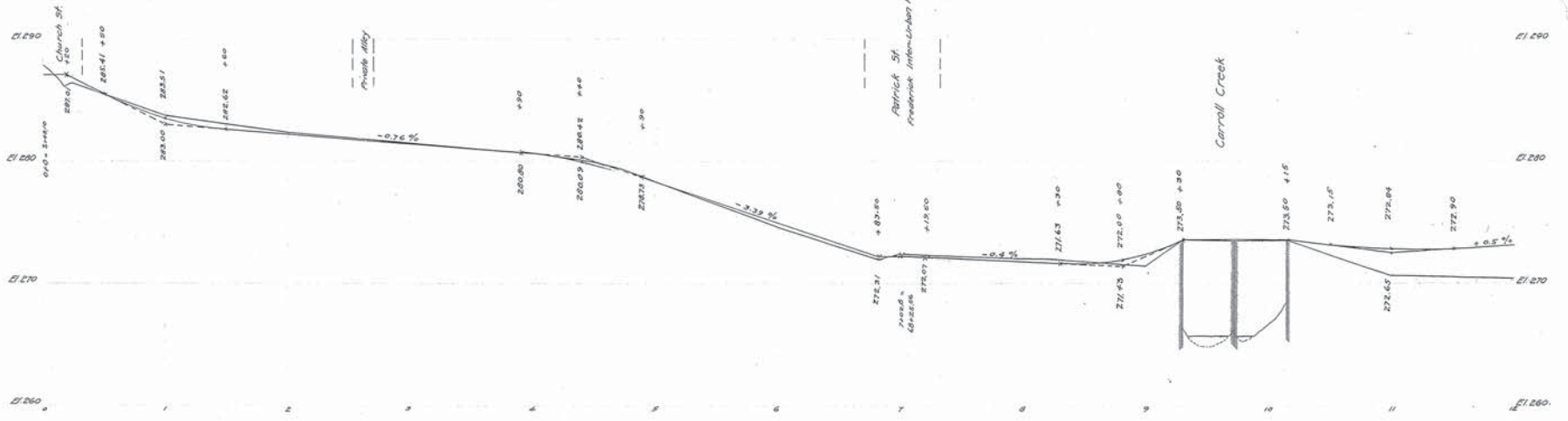


WESTINGHOUSE GEORGE KERR & Co.  
ENGINEERS  
6 & 10 BRIDGE ST. NEW YORK.

Drawn by J.A. de Ral  
Checked by



Note: The line shown in red and marked street line represents a line beyond which no buildings shall be built.  
The grade line shown on profile is an average grade between curbs.



Adopted by The Mayor and Aldermen of Frederick  
by ordinance passed and approved Dec. 3, 1909

Attest:  
*M.A. McCaffrey*  
City Registrar.

The Mayor and Aldermen of Frederick  
By *Geo. Smith* Mayor

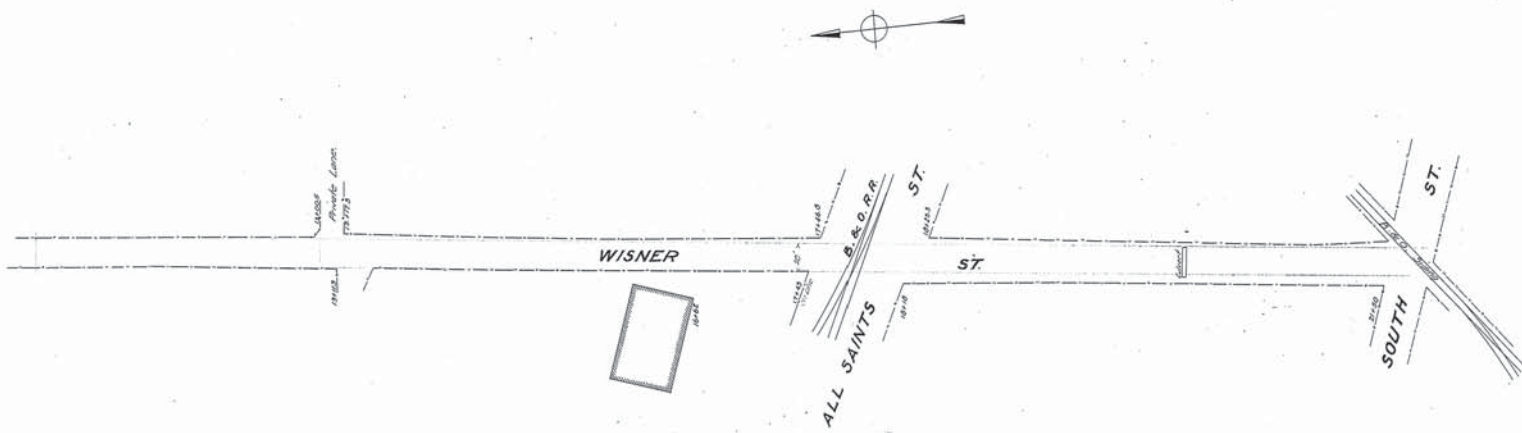
FREDERICK CITY.  
PLAN & PROFILE OF WISNER STREET.  
SHOWING ESTABLISHED GRADE & STREET LINE.  
Scales: 1" = 40' HORIZ.  
1" = 10' VERT.  
Frederick Md.  
Oct 17 1907.  
Sheet 1 of 2 Sheets.

N.Y. NR 19873.  
R.L.P.

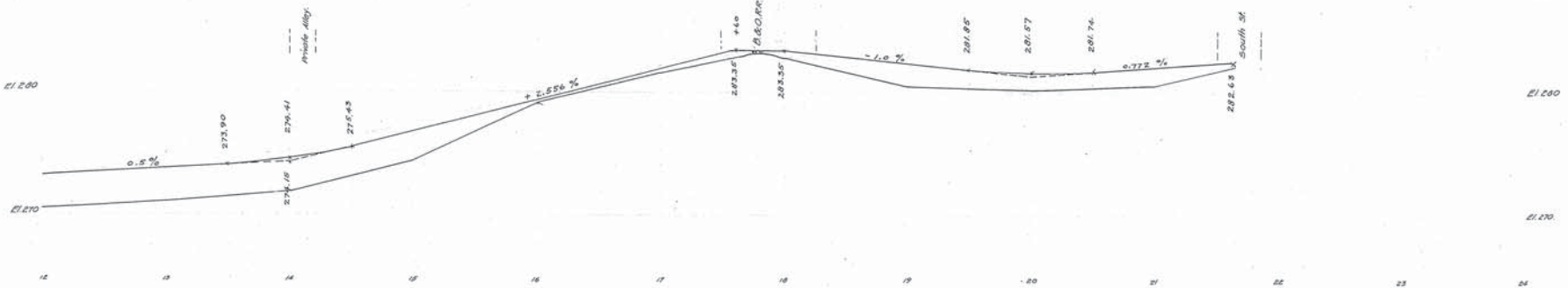
WESTINGHOUSE CHURCH, KERR & CO. 19873

WESTINGHOUSE, CHURCH KERR & Co.  
ENGINEERS  
6 & 10 BRIDGE ST NEW YORK.

Drawn by J.Q. & H.C.  
Checked by



Note: The line shown in red and marked street line represents a line beyond which no buildings shall be built.  
The grade line shown on profile is an average grade between curbs.



Adopted by The Mayor and Aldermen of Frederick  
by ordinance passed and approved Dec. 3, 1909

Attest:  
*W.A. McCaffrey*  
City Registrar.

The Mayor and Aldermen of Frederick,  
By *Geo. Edwards* Mayor

FREDERICK CITY.  
PLAN AND PROFILE OF WISNER STREET.  
SHOWING ESTABLISHED GRADE AND STREET LINE.  
Frederick Md. Oct. 17 1907.  
Sheet 2 of 2 Sheets.

N.Y. No 19874.

WESTINGHOUSE CHURCH, KERR & CO. 19874

WISNER STREET